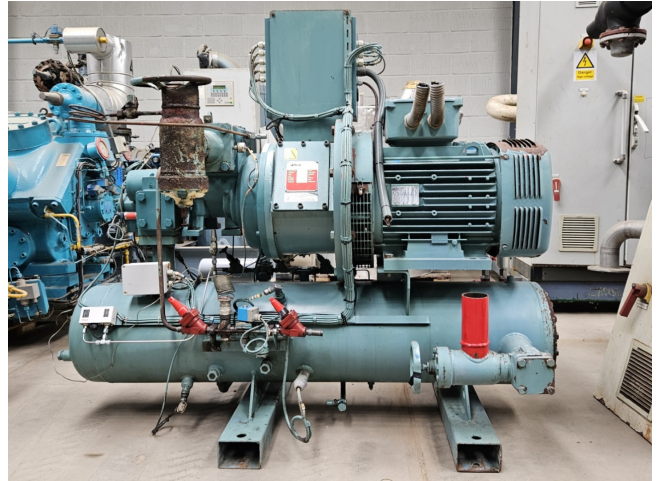


# Sabroe XJF120S / RXF 50

## Specifications

Marque	Sabroe
Le type	XJF120S / RXF 50
Réfrigérant	NH 3 (ammonia)
Électromoteur Specs	50/60 Hz - 90/103 kW - 2955/3535 RPM
Démarrage à vide	✓
Contrôle de capacité	✓
Sur le châssis en acier	✓
Interrupteurs de sécurité de pression	✓
Séparateur d'huile	✓
Electrovanne	✓
Panneau de configuration	✓
Remarques	Y.o.b. 2005
Tailles	2190x1150x1740 mm (LxWxH)
Stock	1



## Description

### Used Sabroe XJF120S / RXF 50

Used Sabroe RXF 50 compressor unit on R717 (NH3). Complete with a Sabroe XJF120S screw compressor, Leroy Somer PLS250SP-T electro motor: 50/60 Hz - 90/103 kW - 2955/3535 RPM, oil separator with a volume of 220 liter and a control cabinet with a Frick RXF display panel.

\*Why choose for HOSBV? Were not only the largest used refrigeration specialist in Europe, but also, we deliver all equipment including an extensive test, warranty and industrial cleaning.

\*Optional we can also perform a new paint job and arrange the logistics.

